

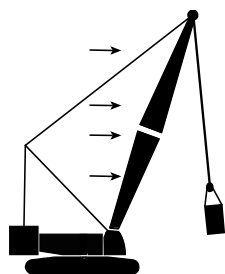
Wind Conditions

Luffing Jib No. 135 on
Boom No. B10:82A

General Information

- A. Judgment and experience of qualified operators, job planners, and supervisors must be used to compensate for affect of wind on lifted load, boom, and luffing jib by reducing ratings, reducing operating speeds, or a combination of both. Failing to observe this precaution can cause crane to tip or boom and luffing jib to collapse. Death or serious injury to personnel can result.
- B. Wind speed (to include wind gusts) must be monitored by job planners and supervisors. *Be aware that wind speed at luffing jib point can be greater than wind speed at ground level.*
- C. Lifted loads are calculated using an effective sail area of 1,2 m²/1 000 kg (5.86 ft²/1,000 lb). *Be aware that the larger the sail area of the load, the greater the wind's affect on the load.*
- D. Wind adversely affects lifting capacity and stability as shown below. The result could be loss of control over the load and crane, even if the load is within the crane's capacity.
- E. As a general rule, ratings and operating speeds must be reduced when: **Wind causes load to swing forward past allowable operating radius or sideways past either boom hinge pin.**

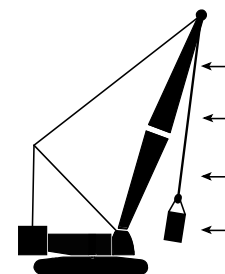
How Wind Affects a Crane



Forward stability is affected by wind on the rear of the boom and luffing jib. Wind applies a force to the boom, luffing jib, and load that adds to the crane's overturning moment. This action has the same effect as adding load to the hook.

The wind's affect on the rear of the load increases load radius. This condition can result in an overload hazard, possibly causing the crane to tip or the boom and luffing jib to collapse.

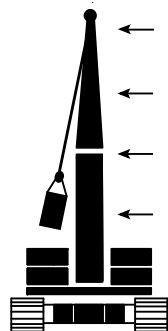
To avoid this hazard, reduce operating speeds and load (see appropriate table for maximum wind speed).



Backward stability is affected by wind on the front of the boom and luffing jib. This condition is especially dangerous when the boom and/or luffing jib is at or near the maximum angle when operating without load.

Wind forces on the front of the boom and luffing jib reduce the normal forward tipping effect of the boom and luffing jib. The crane can tip or the boom and luffing jib can collapse if this condition is not avoided.

The boom or luffing jib can buckle and collapse if the load contacts the boom or luffing jib.



Boom and luffing jib strength is affected the most when the wind acts on the side of the boom and luffing jib.

The wind's affect on the side of the load can cause the load to swing out past the boom hinge pin. This condition can result in excessive side load forces on the boom and luffing jib, possibly causing the crane to tip or the boom and luffing jib to collapse.

To avoid this hazard, reduce operating speeds and load (see appropriate table for maximum wind speed).

Wind Conditions

Luffing Jib No. 135 on
Boom No. B10:82A

In Service

Operation is permitted in steady winds or gusts up to the maximum wind speed given in the ***In Service*** portion of Tables 1 thru 13, provided the lifted load does not exceed capacity chart percentage. Raising and lowering is permitted within ***In Service*** wind speeds.

Wind speed to be measured at luffing jib point elevation.

Refer to luffing jib capacity chart for specific backward stability conditions.

Out of Service

Operation is not permitted and ***Out of Service Conditions*** must be followed when anticipated wind speed exceeds maximum value listed in the ***In Service*** portion of Tables 1 thru 13 for given configuration.

Out of Service Conditions

Parking Position - Park crane with load blocks, hooks, and weight ball on ground or secured and position boom at 70 degrees and luffing jib at 50 degrees before ***In Service*** wind speed is exceeded.

Jack-Knifed Position - Lower boom and luffing jib until jib point is on ground and jib straps are slack, following Luffing Jib Raising Procedure, before ***In Service*** wind speed is exceeded.

Ground Position - Lower boom and luffing jib onto blocking at ground level before ***In Service*** wind speed is exceeded.

REFERENCE ONLY!

Wind Conditions

Luffing Jib No. 135 on
Boom No. B10:82A

Table 1

Boom Length m (ft)	24,4 (80.0)										
Luffing Jib Length m (ft)	21,3 (70.0)	24,4 (80.0)	27,4 (90.0)	30,5 (100.0)	33,5 (110.0)	36,6 (120.0)	39,6 (130.0)	42,7 (140.0)	45,7 (150.0)	48,8 (160.0)	51,8 (170.0)
Percent of Capacity Chart	Maximum Permitted In Service Wind Speeds m/s (mph)										
100	11 (25)	11 (25)	11 (25)	11 (25)	11 (25)	11 (25)	9 (20)	9 (20)	9 (20)	9 (20)	9 (20)
90	11 (25)	11 (25)	11 (25)	11 (25)	11 (25)	11 (25)	11 (25)	11 (25)	11 (25)	11 (25)	11 (25)
80	14 (30)	14 (30)	14 (30)	14 (30)	14 (30)	14 (30)	14 (30)	14 (30)	11 (25)	11 (25)	11 (25)
70	16 (35)	16 (35)	16 (35)	16 (35)	16 (35)	14 (30)	14 (30)	14 (30)	14 (30)	14 (30)	14 (30)
60	16 (35)	16 (35)	16 (35)	16 (35)	16 (35)	16 (35)	14 (30)	14 (30)	14 (30)	14 (30)	14 (30)
Condition	Maximum Permitted Out of Service Wind Speeds m/s (mph)										
Parking Position Boom 70°, LJ 50°	22 (50)	22 (50)	22 (50)	22 (50)	22 (50)	22 (50)	22 (50)	22 (50)	22 (50)	22 (50)	22 (50)
Jack-Knifed Position	22 (50)	22 (50)	22 (50)	22 (50)	22 (50)	22 (50)	22 (50)	22 (50)	22 (50)	22 (50)	22 (50)

Table 2

Boom Length m (ft)	27,4 (90.0)										
Luffing Jib Length m (ft)	21,3 (70.0)	24,4 (80.0)	27,4 (90.0)	30,5 (100.0)	33,5 (110.0)	36,6 (120.0)	39,6 (130.0)	42,7 (140.0)	45,7 (150.0)	48,8 (160.0)	51,8 (170.0)
Percent of Capacity Chart	Maximum Permitted In Service Wind Speeds m/s (mph)										
100	11 (25)	11 (25)	9 (20)	9 (20)	9 (20)	9 (20)	9 (20)	9 (20)	9 (20)	9 (20)	9 (20)
90	11 (25)	11 (25)	11 (25)	11 (25)	11 (25)	11 (25)	11 (25)	11 (25)	11 (25)	11 (25)	11 (25)
80	14 (30)	14 (30)	14 (30)	14 (30)	14 (30)	14 (30)	11 (25)	11 (25)	11 (25)	11 (25)	11 (25)
70	16 (35)	16 (35)	16 (35)	16 (35)	14 (30)	14 (30)	14 (30)	14 (30)	11 (25)	11 (25)	11 (25)
60	16 (35)	16 (35)	16 (35)	16 (35)	16 (35)	16 (35)	14 (30)	14 (30)	14 (30)	14 (30)	14 (30)
Condition	Maximum Permitted Out of Service Wind Speeds m/s (mph)										
Parking Position Boom 70°, LJ 50°	22 (50)	22 (50)	22 (50)	22 (50)	22 (50)	22 (50)	22 (50)	22 (50)	22 (50)	22 (50)	22 (50)
Jack-Knifed Position	22 (50)	22 (50)	22 (50)	22 (50)	22 (50)	22 (50)	22 (50)	22 (50)	22 (50)	22 (50)	22 (50)

Wind Conditions

Luffing Jib No. 135 on
Boom No. B10:82A

Table 3

Boom Length m (ft)	30,5 (100.0)										
Luffing Jib Length m (ft)	21,3 (70.0)	24,4 (80.0)	27,4 (90.0)	30,5 (100.0)	33,5 (110.0)	36,6 (120.0)	39,6 (130.0)	42,7 (140.0)	45,7 (150.0)	48,8 (160.0)	51,8 (170.0)
Percent of Capacity Chart	Maximum Permitted In Service Wind Speeds m/s (mph)										
100	11 (25)	11 (25)	9 (20)	9 (20)	9 (20)	9 (20)	9 (20)	9 (20)	9 (20)	9 (20)	9 (20)
90	11 (25)	11 (25)	11 (25)	11 (25)	11 (25)	11 (25)	11 (25)	11 (25)	11 (25)	11 (25)	11 (25)
80	14 (30)	14 (30)	14 (30)	14 (30)	14 (30)	14 (30)	11 (25)	11 (25)	11 (25)	11 (25)	11 (25)
70	16 (35)	16 (35)	16 (35)	16 (35)	14 (30)	14 (30)	14 (30)	11 (25)	11 (25)	11 (25)	11 (25)
60	16 (35)	16 (35)	16 (35)	16 (35)	16 (35)	14 (30)	14 (30)	14 (30)	14 (30)	14 (30)	11 (25)
Condition	Maximum Permitted Out of Service Wind Speeds m/s (mph)										
Parking Position Boom 70°, LJ 50°	22 (50)	22 (50)	22 (50)	22 (50)	22 (50)	22 (50)	22 (50)	22 (50)	22 (50)	22 (50)	22 (50)
Jack-Knifed Position	22 (50)	22 (50)	22 (50)	22 (50)	22 (50)	22 (50)	22 (50)	22 (50)	22 (50)	22 (50)	22 (50)

Table 4

Boom Length m (ft)	33,5 (110.0)										
Luffing Jib Length m (ft)	21,3 (70.0)	24,4 (80.0)	27,4 (90.0)	30,5 (100.0)	33,5 (110.0)	36,6 (120.0)	39,6 (130.0)	42,7 (140.0)	45,7 (150.0)	48,8 (160.0)	51,8 (170.0)
Percent of Capacity Chart	Maximum Permitted In Service Wind Speeds m/s (mph)										
100	11 (25)	11 (25)	9 (20)	9 (20)	9 (20)	9 (20)	9 (20)	9 (20)	9 (20)	9 (20)	9 (20)
90	11 (25)	11 (25)	11 (25)	11 (25)	11 (25)	11 (25)	11 (25)	11 (25)	11 (25)	11 (25)	11 (25)
80	14 (30)	14 (30)	14 (30)	14 (30)	14 (30)	11 (25)	11 (25)	11 (25)	11 (25)	11 (25)	11 (25)
70	16 (35)	16 (35)	16 (35)	14 (30)	14 (30)	14 (30)	14 (30)	11 (25)	11 (25)	11 (25)	11 (25)
60	16 (35)	16 (35)	16 (35)	16 (35)	16 (35)	14 (30)	14 (30)	14 (30)	11 (25)	11 (25)	11 (25)
Condition	Maximum Permitted Out of Service Wind Speeds m/s (mph)										
Parking Position Boom 70°, LJ 50°	22 (50)	22 (50)	22 (50)	22 (50)	22 (50)	22 (50)	22 (50)	22 (50)	22 (50)	22 (50)	22 (50)
Jack-Knifed Position	22 (50)	22 (50)	22 (50)	22 (50)	22 (50)	22 (50)	22 (50)	22 (50)	22 (50)	22 (50)	22 (50)

Wind Conditions

Luffing Jib No. 135 on
Boom No. B10:82A

Table 5

Boom Length m (ft)	36,6 (120.0)										
Luffing Jib Length m (ft)	21,3 (70.0)	24,4 (80.0)	27,4 (90.0)	30,5 (100.0)	33,5 (110.0)	36,6 (120.0)	39,6 (130.0)	42,7 (140.0)	45,7 (150.0)	48,8 (160.0)	51,8 (170.0)
Percent of Capacity Chart	Maximum Permitted In Service Wind Speeds m/s (mph)										
100	11 (25)	11 (25)	9 (20)	9 (20)	9 (20)	9 (20)	9 (20)	9 (20)	9 (20)	9 (20)	9 (20)
90	11 (25)	11 (25)	11 (25)	11 (25)	11 (25)	11 (25)	11 (25)	11 (25)	11 (25)	11 (25)	11 (25)
80	14 (30)	14 (30)	14 (30)	14 (30)	14 (30)	11 (25)	11 (25)	11 (25)	11 (25)	11 (25)	11 (25)
70	16 (35)	16 (35)	16 (35)	14 (30)	14 (30)	14 (30)	14 (30)	11 (25)	11 (25)	11 (25)	11 (25)
60	16 (35)	16 (35)	16 (35)	16 (35)	16 (35)	14 (30)	14 (30)	14 (30)	11 (25)	11 (25)	11 (25)
Condition	Maximum Permitted Out of Service Wind Speeds m/s (mph)										
Parking Position Boom 70°, LJ 50°	22 (50)	22 (50)	22 (50)	22 (50)	22 (50)	22 (50)	22 (50)	22 (50)	22 (50)	22 (50)	22 (50)
Jack-Knifed Position	22 (50)	22 (50)	22 (50)	22 (50)	22 (50)	22 (50)	22 (50)	22 (50)	22 (50)	22 (50)	22 (50)

Table 6

Boom Length m (ft)	39,6 (130.0)										
Luffing Jib Length m (ft)	21,3 (70.0)	24,4 (80.0)	27,4 (90.0)	30,5 (100.0)	33,5 (110.0)	36,6 (120.0)	39,6 (130.0)	42,7 (140.0)	45,7 (150.0)	48,8 (160.0)	51,8 (170.0)
Percent of Capacity Chart	Maximum Permitted In Service Wind Speeds m/s (mph)										
100	11 (25)	9 (20)	9 (20)	9 (20)	9 (20)	9 (20)	9 (20)	9 (20)	9 (20)	9 (20)	9 (20)
90	11 (25)	11 (25)	11 (25)	11 (25)	11 (25)	11 (25)	11 (25)	11 (25)	11 (25)	11 (25)	11 (25)
80	14 (30)	14 (30)	14 (30)	14 (30)	14 (30)	11 (25)	11 (25)	11 (25)	11 (25)	11 (25)	11 (25)
70	16 (35)	16 (35)	16 (35)	14 (30)	14 (30)	14 (30)	11 (25)	11 (25)	11 (25)	11 (25)	11 (25)
60	16 (35)	16 (35)	16 (35)	16 (35)	14 (30)	14 (30)	14 (30)	11 (25)	11 (25)	11 (25)	11 (25)
Condition	Maximum Permitted Out of Service Wind Speeds m/s (mph)										
Parking Position Boom 70°, LJ 50°	22 (50)	22 (50)	22 (50)	22 (50)	22 (50)	22 (50)	22 (50)	22 (50)	22 (50)	22 (50)	22 (50)
Jack-Knifed Position	22 (50)	22 (50)	22 (50)	22 (50)	22 (50)	22 (50)	22 (50)	22 (50)	22 (50)	22 (50)	22 (50)

Wind Conditions

Luffing Jib No. 135 on
Boom No. B10:82A

Table 7

Boom Length m (ft)	42,7 (140.0)										
Luffing Jib Length m (ft)	21,3 (70.0)	24,4 (80.0)	27,4 (90.0)	30,5 (100.0)	33,5 (110.0)	36,6 (120.0)	39,6 (130.0)	42,7 (140.0)	45,7 (150.0)	48,8 (160.0)	51,8 (170.0)
Percent of Capacity Chart	Maximum Permitted In Service Wind Speeds m/s (mph)										
100	9 (20)	9 (20)	9 (20)	9 (20)	9 (20)	9 (20)	9 (20)	9 (20)	9 (20)	9 (20)	9 (20)
90	11 (25)	11 (25)	11 (25)	11 (25)	11 (25)	11 (25)	11 (25)	11 (25)	11 (25)	11 (25)	11 (25)
80	14 (30)	14 (30)	14 (30)	14 (30)	11 (25)	11 (25)	11 (25)	11 (25)	11 (25)	11 (25)	11 (25)
70	16 (35)	16 (35)	16 (35)	14 (30)	14 (30)	14 (30)	11 (25)	11 (25)	11 (25)	11 (25)	11 (25)
60	16 (35)	16 (35)	16 (35)	16 (35)	14 (30)	14 (30)	14 (30)	11 (25)	11 (25)	11 (25)	11 (25)
Condition	Maximum Permitted Out of Service Wind Speeds m/s (mph)										
Parking Position Boom 70°, LJ 50°	22 (50)	22 (50)	22 (50)	22 (50)	22 (50)	22 (50)	22 (50)	22 (50)	22 (50)	22 (50)	22 (50)
Jack-Knifed Position	22 (50)	22 (50)	22 (50)	22 (50)	22 (50)	22 (50)	22 (50)	22 (50)	22 (50)	22 (50)	22 (50)

Table 8

Boom Length m (ft)	45,7 (150.0)										
Luffing Jib Length m (ft)	21,3 (70.0)	24,4 (80.0)	27,4 (90.0)	30,5 (100.0)	33,5 (110.0)	36,6 (120.0)	39,6 (130.0)	42,7 (140.0)	45,7 (150.0)	48,8 (160.0)	51,8 (170.0)
Percent of Capacity Chart	Maximum Permitted In Service Wind Speeds m/s (mph)										
100	9 (20)	9 (20)	9 (20)	9 (20)	9 (20)	9 (20)	9 (20)	9 (20)	9 (20)	9 (20)	9 (20)
90	11 (25)	11 (25)	11 (25)	11 (25)	11 (25)	11 (25)	11 (25)	9 (20)	9 (20)	9 (20)	9 (20)
80	14 (30)	14 (30)	14 (30)	14 (30)	11 (25)	11 (25)	11 (25)	11 (25)	11 (25)	11 (25)	11 (25)
70	16 (35)	16 (35)	14 (30)	14 (30)	14 (30)	14 (30)	11 (25)	11 (25)	11 (25)	11 (25)	11 (25)
60	16 (35)	16 (35)	16 (35)	16 (35)	14 (30)	14 (30)	14 (30)	11 (25)	11 (25)	11 (25)	11 (25)
Condition	Maximum Permitted Out of Service Wind Speeds m/s (mph)										
Parking Position Boom 70°, LJ 50°	22 (50)	22 (50)	22 (50)	22 (50)	22 (50)	22 (50)	22 (50)	22 (50)	22 (50)	22 (50)	22 (50)
Jack-Knifed Position	22 (50)	22 (50)	22 (50)	22 (50)	22 (50)	22 (50)	22 (50)	22 (50)	22 (50)	22 (50)	22 (50)

Wind Conditions

Luffing Jib No. 135 on
Boom No. B10:82A

Table 9

Boom Length m (ft)	48,8 (160.0)										
Luffing Jib Length m (ft)	21,3 (70.0)	24,4 (80.0)	27,4 (90.0)	30,5 (100.0)	33,5 (110.0)	36,6 (120.0)	39,6 (130.0)	42,7 (140.0)	45,7 (150.0)	48,8 (160.0)	51,8 (170.0)
Percent of Capacity Chart	Maximum Permitted In Service Wind Speeds m/s (mph)										
100	9 (20)	9 (20)	9 (20)	9 (20)	9 (20)	9 (20)	9 (20)	9 (20)	9 (20)	9 (20)	9 (20)
90	11 (25)	11 (25)	11 (25)	11 (25)	11 (25)	11 (25)	11 (25)	9 (20)	9 (20)	9 (20)	9 (20)
80	14 (30)	14 (30)	14 (30)	14 (30)	11 (25)	11 (25)	11 (25)	11 (25)	11 (25)	11 (25)	11 (25)
70	14 (30)	14 (30)	14 (30)	14 (30)	14 (30)	11 (25)	11 (25)	11 (25)	11 (25)	11 (25)	11 (25)
60	14 (30)	14 (30)	14 (30)	14 (30)	14 (30)	14 (30)	14 (30)	11 (25)	11 (25)	11 (25)	11 (25)
Condition	Maximum Permitted Out of Service Wind Speeds m/s (mph)										
Parking Position Boom 70°, LJ 50°	22 (50)	22 (50)	22 (50)	22 (50)	22 (50)	22 (50)	22 (50)	22 (50)	22 (50)	22 (50)	22 (50)
Jack-Knifed Position	22 (50)	22 (50)	22 (50)	22 (50)	22 (50)	22 (50)	22 (50)	22 (50)	22 (50)	22 (50)	22 (50)

Table 10

Boom Length m (ft)	51,8 (170.0)										
Luffing Jib Length m (ft)	21,3 (70.0)	24,4 (80.0)	27,4 (90.0)	30,5 (100.0)	33,5 (110.0)	36,6 (120.0)	39,6 (130.0)	42,7 (140.0)	45,7 (150.0)	48,8 (160.0)	51,8 (170.0)
Percent of Capacity Chart	Maximum Permitted In Service Wind Speeds m/s (mph)										
100	9 (20)	9 (20)	9 (20)	9 (20)	9 (20)	9 (20)	9 (20)	9 (20)	9 (20)	9 (20)	9 (20)
90	11 (25)	11 (25)	11 (25)	11 (25)	11 (25)	11 (25)	9 (20)	9 (20)	9 (20)	9 (20)	9 (20)
80	14 (30)	14 (30)	14 (30)	14 (30)	11 (25)	11 (25)	11 (25)	11 (25)	9 (20)	9 (20)	9 (20)
70	14 (30)	14 (30)	14 (30)	14 (30)	14 (30)	11 (25)	11 (25)	11 (25)	11 (25)	11 (25)	11 (25)
60	14 (30)	14 (30)	14 (30)	14 (30)	14 (30)	14 (30)	11 (25)	11 (25)	11 (25)	11 (25)	11 (25)
Condition	Maximum Permitted Out of Service Wind Speeds m/s (mph)										
Parking Position Boom 70°, LJ 50°	22 (50)	22 (50)	22 (50)	22 (50)	22 (50)	22 (50)	22 (50)	22 (50)	22 (50)	22 (50)	22 (50)
Jack-Knifed Position	22 (50)	22 (50)	22 (50)	22 (50)	22 (50)	22 (50)	22 (50)	22 (50)	22 (50)	22 (50)	22 (50)

Wind Conditions

Luffing Jib No. 135 on
Boom No. B10:82A

Table 11

Boom Length m (ft)	54,9 (180.0)										
Luffing Jib Length m (ft)	21,3 (70.0)	24,4 (80.0)	27,4 (90.0)	30,5 (100.0)	33,5 (110.0)	36,6 (120.0)	39,6 (130.0)	42,7 (140.0)	45,7 (150.0)	48,8 (160.0)	51,8 (170.0)
Percent of Capacity Chart	Maximum Permitted In Service Wind Speeds m/s (mph)										
100	9 (20)	9 (20)	9 (20)	9 (20)	9 (20)	9 (20)	9 (20)	9 (20)	9 (20)	9 (20)	9 (20)
90	11 (25)	11 (25)	11 (25)	11 (25)	11 (25)	11 (25)	9 (20)	9 (20)	9 (20)	9 (20)	9 (20)
80	14 (30)	14 (30)	14 (30)	11 (25)	11 (25)	11 (25)	11 (25)	9 (20)	9 (20)	9 (20)	9 (20)
70	14 (30)	14 (30)	14 (30)	14 (30)	14 (30)	11 (25)	11 (25)	11 (25)	11 (25)	11 (25)	11 (25)
60	14 (30)	14 (30)	14 (30)	14 (30)	14 (30)	14 (30)	11 (25)	11 (25)	11 (25)	11 (25)	11 (25)
Condition	Maximum Permitted Out of Service Wind Speeds m/s (mph)										
Parking Position Boom 70°, LJ 50°	22 (50)	22 (50)	22 (50)	22 (50)	22 (50)	22 (50)	22 (50)	22 (50)	22 (50)	22 (50)	22 (50)
Jack-Knifed Position	22 (50)	22 (50)	22 (50)	22 (50)	22 (50)	22 (50)	22 (50)	22 (50)	22 (50)	22 (50)	22 (50)

Table 12

Boom Length m (ft)	57,9 (190.0)										
Luffing Jib Length m (ft)	21,3 (70.0)	24,4 (80.0)	27,4 (90.0)	30,5 (100.0)	33,5 (110.0)	36,6 (120.0)	39,6 (130.0)	42,7 (140.0)	45,7 (150.0)	48,8 (160.0)	51,8 (170.0)
Percent of Capacity Chart	Maximum Permitted In Service Wind Speeds m/s (mph)										
100	9 (20)	9 (20)	9 (20)	9 (20)	9 (20)	9 (20)	9 (20)	9 (20)	9 (20)	9 (20)	9 (20)
90	11 (25)	11 (25)	11 (25)	11 (25)	11 (25)	11 (25)	9 (20)	9 (20)	9 (20)	9 (20)	9 (20)
80	14 (30)	14 (30)	14 (30)	11 (25)	11 (25)	11 (25)	11 (25)	9 (20)	9 (20)	9 (20)	9 (20)
70	14 (30)	14 (30)	14 (30)	14 (30)	14 (30)	11 (25)	11 (25)	11 (25)	9 (20)	9 (20)	9 (20)
60	14 (30)	14 (30)	14 (30)	14 (30)	14 (30)	14 (30)	11 (25)	11 (25)	11 (25)	11 (25)	11 (25)
Condition	Maximum Permitted Out of Service Wind Speeds m/s (mph)										
Parking Position Boom 70°, LJ 50°	22 (50)	22 (50)	22 (50)	22 (50)	22 (50)	22 (50)	22 (50)	22 (50)	22 (50)	22 (50)	22 (50)
Jack-Knifed Position	22 (50)	22 (50)	22 (50)	22 (50)	22 (50)	22 (50)	22 (50)	22 (50)	22 (50)	22 (50)	22 (50)

Wind Conditions

Luffing Jib No. 135 on
Boom No. B10:82A

Table 13

Boom Length m (ft)	61,0 (200.0)										
Luffing Jib Length m (ft)	21,3 (70.0)	24,4 (80.0)	27,4 (90.0)	30,5 (100.0)	33,5 (110.0)	36,6 (120.0)	39,6 (130.0)	42,7 (140.0)	45,7 (150.0)	48,8 (160.0)	51,8 (170.0)
Percent of Capacity Chart	Maximum Permitted In Service Wind Speeds m/s (mph)										
100	9 (20)	9 (20)	9 (20)	9 (20)	9 (20)	9 (20)	9 (20)	9 (20)	9 (20)	9 (20)	9 (20)
90	11 (25)	11 (25)	11 (25)	11 (25)	11 (25)	9 (20)	9 (20)	9 (20)	9 (20)	9 (20)	9 (20)
80	14 (30)	14 (30)	14 (30)	11 (25)	11 (25)	11 (25)	11 (25)	9 (20)	9 (20)	9 (20)	9 (20)
70	14 (30)	14 (30)	14 (30)	14 (30)	11 (25)	11 (25)	11 (25)	11 (25)	9 (20)	9 (20)	9 (20)
60	14 (30)	14 (30)	14 (30)	14 (30)	14 (30)	11 (25)	11 (25)	11 (25)	11 (25)	11 (25)	11 (25)
Condition	Maximum Permitted Out of Service Wind Speeds m/s (mph)										
Parking Position Boom 70°, LJ 50°	22 (50)	22 (50)	22 (50)	22 (50)	22 (50)	22 (50)	22 (50)	22 (50)	22 (50)	22 (50)	22 (50)
Jack-Knifed Position	22 (50)	22 (50)	22 (50)	22 (50)	22 (50)	22 (50)	22 (50)	22 (50)	22 (50)	22 (50)	22 (50)

REFERENCE